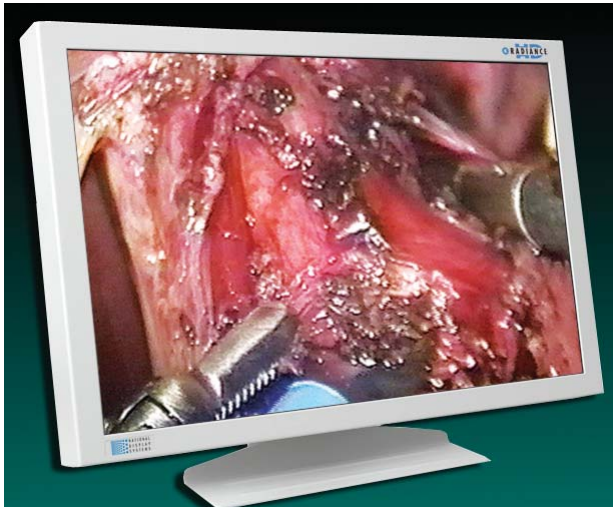




Endoscope Repair: Flexible, Rigid, Camera Heads, Power • **Refurbished Endoscopy Equipment:** GI and Surgical
• **ERBE Surgical Systems:** Electrosurgery, Helix Hydro-Jet™ •



High Definition Surgical Displays

Features And Benefits:

Unparalleled Image Quality and Consistency

- Displays feature the proprietary Picture-Perfect Technology™
- Eliminates jagged edges for superior clarity.
- Image Lag Reduction™ (ILR) technology delivers industry-leading lag-free imaging and the fastest video response (10-16 ms).
- Proprietary factory color-calibration guarantees reliable, consistent and realistic image reproduction.

New Levels of Control and Flexibility

- Remote Functionality Control (RFC) technology provides the ability to adjust display settings and switch video sources remotely; in real-time.
- Procedure specific settings can be stored, ensuring rapid transmission of high-quality video images under any O.R. conditions.
- NDS displays accept multiple input formats and allow images from one source to be simultaneously shown on several displays.

Safety as a Priority

- Every display component meets or exceeds the highest safety standards.
- Fanless cooling prevents the introduction of contaminants into the sterile environment.
- Low-voltage (24VDC) external power supply may be located up to 100 feet away, removing any electrical concerns.
- Front-sealed, anti-glare overlay guarantees the highest level of defense against fluid invasion.

Quality, Consistency, Control and Compliance.

Life Systems, Inc. has partnered with the innovative, medical device manufacturer, NDS Surgical Imaging to provide our customers with the first-class option for display monitoring.

This relationship now offers your organization state-of-the-art LCD flat panels designed specifically for today's O.R. and surgical teams. With high quality displays, O.R. personnel are able to realize superior clinical efficiency, unprecedented control, productivity, and better patient care in any operating room environment.

NDS specializes in manufacturing high-end LCD flat panel displays for minimally invasive surgery, radiology and patient monitoring. Over the past decade, there have been over 100,000 NDS display systems installed in leading medical centers.

All displays are fully compliant, medical-grade devices certified under stringent U.S. and European safety standards.

LSI-NDS-0406



Life Systems, Inc.

515 Trade Center Boulevard

Chesterfield, MO 63005

Phone: 636.787.2100

Fax: 636.787.0016

Toll free: 888.LIFE.SYS / 888.543.3797

www.lifesystemsinc.com

RADIANCE™ SERIES

The Radiance™ is the most sophisticated surgical flat-panel display available. It offers a high-definition interface (HDTV) featuring brightness, high resolution, exceptional contrast, and true color reproduction with unsurpassed visual quality.

The Radiance Series encompasses four models:

- Radiance 19" (traditional 4:3 aspect ratio / HDTV) - Part No. 90R0001
- Radiance 23" (widescreen 16:9 aspect ratio / HDTV) - Part No. 90R0002
- Radiance 32" (widescreen 16:9 aspect ratio / HDTV) - Part No. 90R0005
- Radiance 42" (widescreen 16:9 aspect ratio / HDTV) - Call for Part No.
- 8 Input Formats: SDI, RGBS, Component Video (YPbPr), S-Video (Y/C), Composite, Sync-On-Green (SOG), DVI Digital, and VGA
- 6 Output Formats: SDI, RGBS, YPbPr, S-Video, Composite, SOG
- Surgical Video and Radiology Graphics Imaging
- General Purpose Input / Output Connector (GPIO)
- 170° Wide Viewing Angle



ENDOVUE™ SERIES

The EndoVue™ delivers the key advantages of the Radiance in environments where only video-based images are required.

Multiple sizes and high flexibility make it ideal for a wide variety of surgical and other applications. The EndoVue is the replacement choice for legacy CRT systems. Robust, light-weight, and highly maneuverable, it brings unique benefits to the GI Lab.

The EndoVue Series consists of two models:

- EndoVue 15" (traditional 4:3 aspect ratio) - Part No. 90R0007
- EndoVue 19" (traditional 4:3 aspect ratio) - Part No. 90R0004
- 5 Input Formats: RGBS, Component Video (YPbPr), S-Video (Y/C), Composite, and VGA
- 5 Output Formats: RGBS, YPbPr, S-Video, Composite, and VGA
- Surgical Video Imaging
- 170° Wide Viewing Angle

ACCESSORY ITEMS

EndoVue and Radiance LCD flat-panel displays can be mounted to an arm or an adjustable height stand.

- Video cables are supplied with order.
- Adjustable desktop height stand is an optional accessory - Part No. 26B0063

Life Systems, Inc.
Representing:

